

PB Tee



MODEL	ΦD (Tube Dia.)	M/R
PB4-01T	4	R1/8
PB4-02T		R1/4
PB6-01T	6	R1/8
PB6-02T		R1/4
PB6-03T	6	R3/8
PB8-01T		R1/8
PB8-02T	8	R1/4
PB8-03T		R3/8
PB10-02T	10	R1/4
PB10-03T		R3/8
PB10-04T	10	R1/2
PB12-03T		R3/8
PB12-04T	12	R1/2

PC Straight



MODEL	ΦD (Tube Dia.)	M/R
PC4-M5T	4	M5X0.8
PC4-01T		R1/8
PC4-02T	4	R1/4
PC6-M5T		M5X0.8
PC6-01T	6	R1/8
PC6-02T		R1/4
PC6-03T	6	R3/8
PC8-01T		R1/8
PC8-02T	8	R1/4
PC8-03T		R3/8
PC10-02T	10	R1/4
PC10-03T		R3/8
PC10-04T	10	R1/2
PC12-03T		R3/8
PC12-04T	12	R1/2

PE Union Tee



MODEL	ΦD (Tube Dia.)
PE4T	4
PE6T	6
PE8T	8
PE10T	10
PE12T	12

PG Different Diam. Union Straight



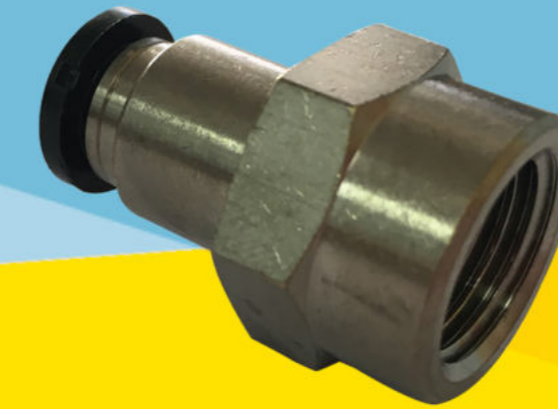
MODEL	ΦD (Tube Dia.)	ΦD (Tube Dia.)
PG6-4T	6	4
PG8-6T	8	6
PG10-8T	10	8
PG12-10T	12	10

PU Union Straight



MODEL	ΦD (Tube Dia.)
PU4T	4
PU6T	6
PU8T	8
PU10T	10
PU12T	12

PCF Female Straight



MODEL	ΦD (Tube Dia.)	M/R
PCF0401	4	R1/8
PCF0402		R1/4
PCF0601	6	R1/8
PCF0602		R1/4
PCF0801	8	R1/8
PCF0802		R1/4
PCF0803	8	R3/8
PCF1002		10

HACHI-PISCO

JSC Speed Control



MODEL	ΦD (Tube Dia.)	M/R
JSC4-M5T	4	M5X0.8
JSC4-01T		R1/8
JSC4-02T	4	R1/4
JSC6-M5T		M5X0.8
JSC6-01T	6	R1/8
JSC6-02T		R1/4
JSC6-03T	6	R3/8
JSC8-01T		R1/8
JSC8-02T	8	R1/4
JSC8-03T		R3/8
JSC8-04T	8	R1/2
JSC10-02T		R1/4
JSC10-03T	10	R3/8
JSC10-04T		R1/2
JSC12-03T	12	R3/8
JSC12-04T		R1/2

PV Union Elbow



MODEL	ΦD (Tube Dia.)
PV4T	4
PV6T	6
PV8T	8
PV10T	10
PV12T	12

PY Union Y



MODEL	ΦD (Tube Dia.)
PY4T	4
PY6T	6
PY8T	8
PY10T	10
PY12T	12

PW Different Diam. Union Y



MODEL	ΦD (Tube Dia.)	ΦD (Tube Dia.)
PW6-4T	6	4
PW8-6T	8	6
PW10-8T	10	8
PW12-10T	12	10

JSMU Speed Control



MODEL	ΦD (Tube Dia.)	ΦD (Tube Dia.)
JSMU4T	4	4
JSMU6T	6	6
JSMU8T	8	8
JSMU10T	10	10
JSMU12T	12	12

PL Elbow



MODEL	ΦD (Tube Dia.)	M/R
PL4-M5T	4	M5X0.8
PL4-01T		R1/8
PL4-02T	4	R1/4
PL6-M5T		M5X0.8
PL6-01T	6	R1/8
PL6-02T		R1/4
PL6-03T	6	R3/8
PL8-01T		R1/8
PL8-02T	8	R1/4
PL8-03T		R3/8
PL10-02T	10	R1/4
PL10-03T		R3/8
PL10-04T	10	R1/2
PL12-03T		R3/8
PL12-04T	12	R1/2

PX Branch Y



MODEL	ΦD (Tube Dia.)	ΦD (Tube Dia.)
PX4-M5T	4	M5X0.8
PX4-01T		R1/8
PX4-02T	4	R1/4
PX6-01T		R1/8
PX6-02T	6	R1/4
PX6-03T		R3/8
PX8-01T	8	R1/8
PX8-02T		R1/4
PX8-03T	8	R3/8
PX10-02T		R1/4
PX10-03T	10	R3/8
PX10-04T		R1/2
PX12-03T	12	R3/8
PX12-04T		R1/2

HACHI
The Choice Of Quality®

BLACK

BLUE

CLAER

Part Number	Size
HACHI04B	4x2.5
HACHI06B	6x4
HACHI08B	8x5
HACHI10B	10x6.5
HACHI12B	12x8

Part Number	Size
HACHI04BL	4x2.5
HACHI06BL	6x4
HACHI08BL	8x5
HACHI10BL	10x6.5
HACHI12BL	12x8

Polyurethane tube

PLASTIC SILENCER	BRASS SILENCER	FLAT SILENCER	PLUG	BUSHING
Size	Size	Size	Size	Size
AS05	ASL01	ASL01F	PLUG018	73220-4-2
AS06	ASL02	ASL02F	PLUG012	73220-6-2
AS08	ASL03	ASL03F	PLUG038	73220-8-2
AS10	ASL04	ASL04F	PLUG012	73220-12-2
AS15				73220-6-4
AS20				73220-8-4
				73220-12-4
				73220-16-4
				73220-8-6
				73220-12-6
				73220-16-6
				73220-12-8
				73220-16-8
				73220-16-12
				73220-20-16

KING OF VALVE GROUP
KING OF VALVE CO., LTD.
 TEL. 02-7330575-7 E-MAIL : bangkok@kingofvalve.com
KING OF VALVE (RATCHABURI) CO., LTD.
 TEL.032-347621-2 E-MAIL : ratchaburi@kingofvalve.com
KING OF VALVE (HATYAI) CO., LTD.
 TEL.074-559022-3 E-MAIL : hatyai@kingofvalve.com
 WWW.KINGOFVALE.COM

Modle	Male(PT)	Modle	Female(A) X Male(B)
73220-4-2	1/8	1/4 x 1/8	
73220-6-2	1/4	3/8 x 1/8	
73220-8-2	3/8	1/2 x 1/8	
73220-12-2	1/2	3/4 x 1/8	
73220-6-4		3/8 x 1/4	
73220-8-4		1/2 x 1/4	
73220-12-4		3/4 x 1/4	
73220-16-4		1 x 1/4	
73220-8-6		1/2 x 3/8	
73220-12-6		3/4 x 3/8	
73220-16-6		1 x 3/8	
73220-12-8		3/4 x 1/2	
73220-16-8		1 x 1/2	
73220-16-12		1 x 3/4	
73220-20-16		1-1/4 x 1	