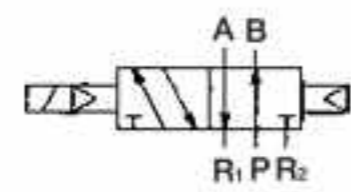


SOLENOID VALVE

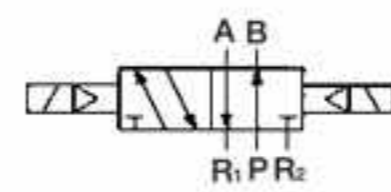
XB520S	2 Position Single solenoid
XB520D	2 Position Double Solenoid
XB520C	3 Position Center Closed
XB520SE	3 Position Exhaust Center
XB520P	3 Position Pressure Center



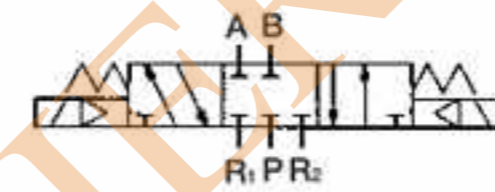
Single Solenoid



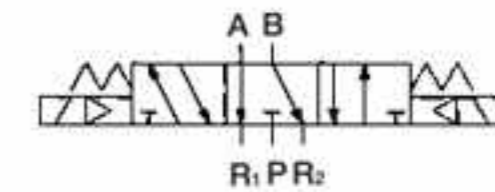
Double Solenoid



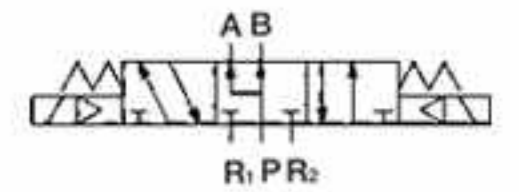
Center Closed



Exhaust Center



Pressure Center



Specifications

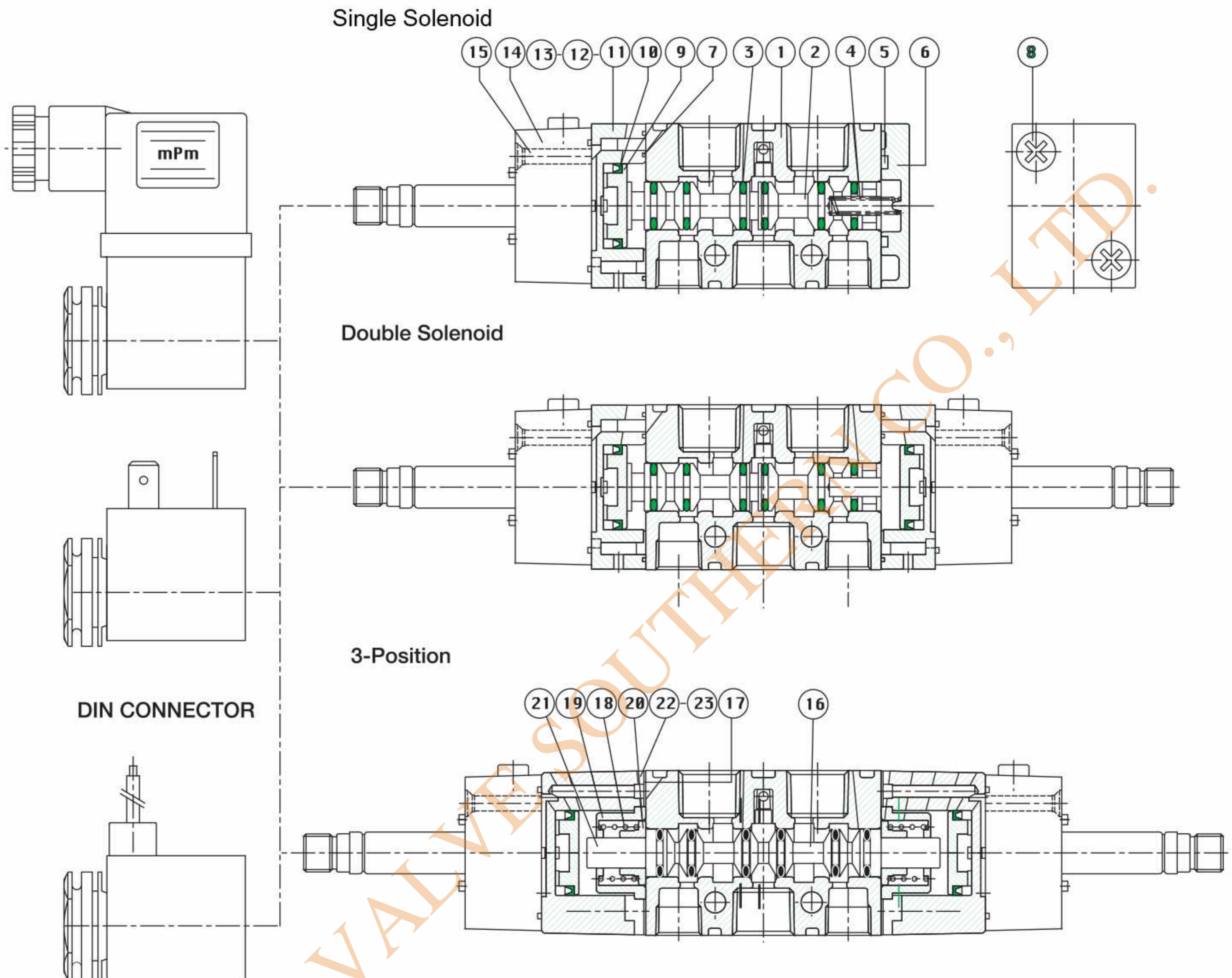
Model No	Unit	XB520S	XB520D	XB520C	XB520SE	XB520P
Fluid		Non-lubricated / Lubricated Air				
Port Size		PT 1/4"				
Effective Area	mm ² (Cv)	18(1.0)		14(0.8)		
Temperature Range	°C	5~60 °C				
Pressure Range	MPa(bar)	0.15~0.9(1.5~9.0)	0.1~0.9(1.0~9.0)	0.2~0.9(2.0~9.0)		
Max. Operating Cycle	cycle/s	10		3		
Response Time	ms	20 or less		35 or less		
Exhaust Type		Individual Exhaust				
Manual Override		Non-lock(Standard), Lever-lock(Option)				
Shock/Vibration Resistance	m/s ²	30G~5G(8.3~200Hz)				

Electrical Specifications

Voltage	V	DC24V, AC110V, AC220V(50~60Hz)
Allowable Voltage Fluctuation	%	±10%
Power Consumption	W, VA	DC24V(2.6W), AC110V(4VA), AC220V(3.5VA)
Insulation class		F
Wiring		Lead Wire, DIN Connector
Indicator Light		LED

SOLENOID VALVE

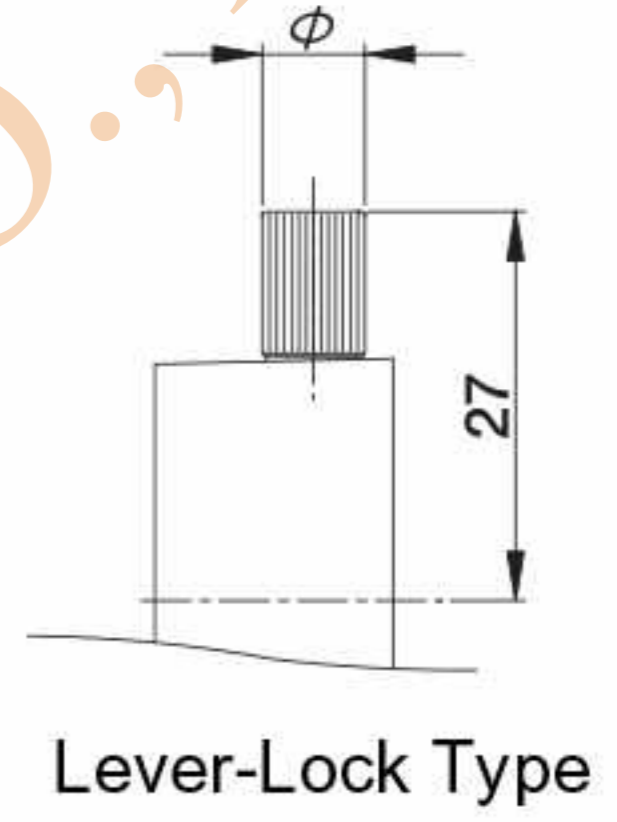
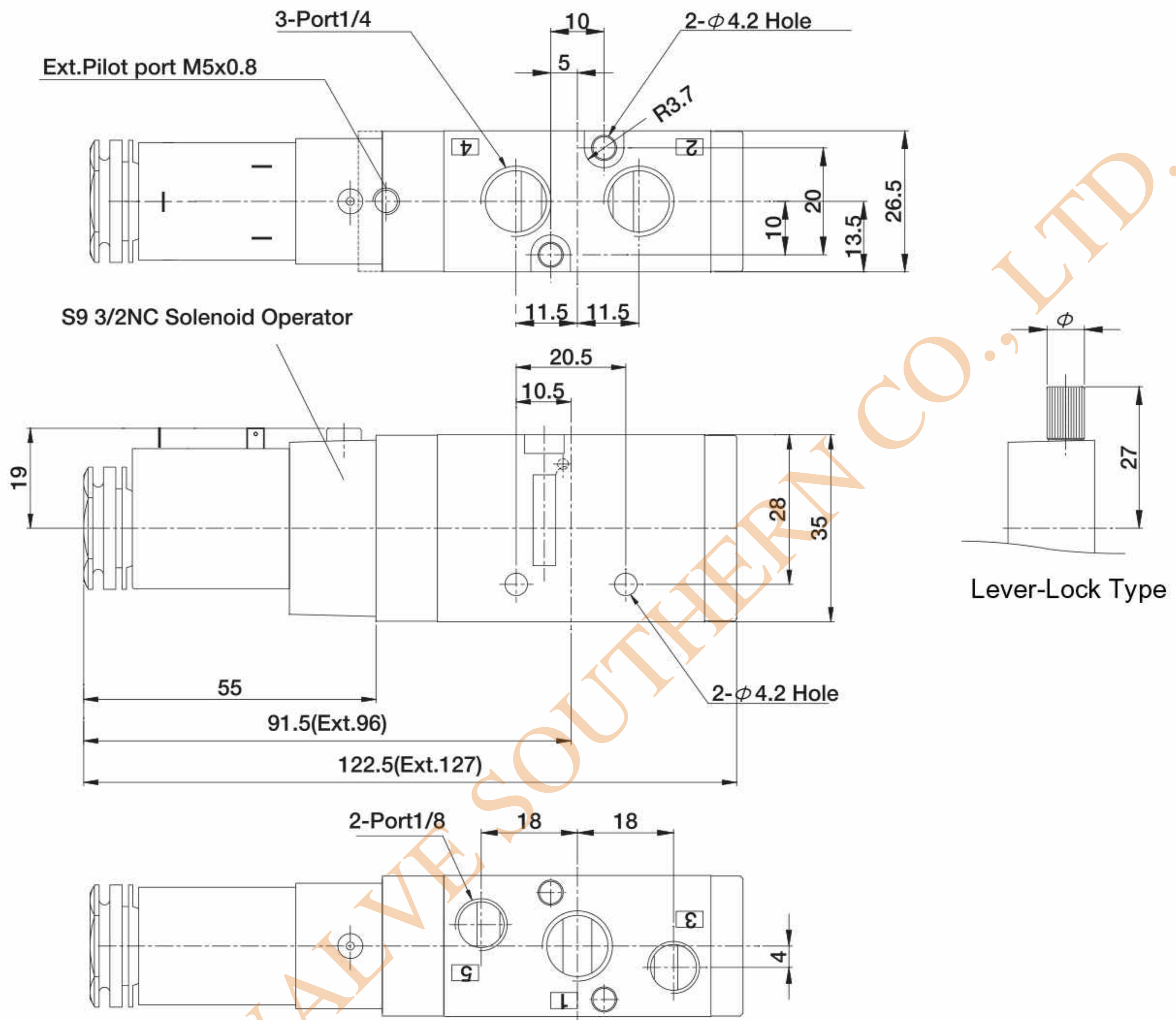
Construction



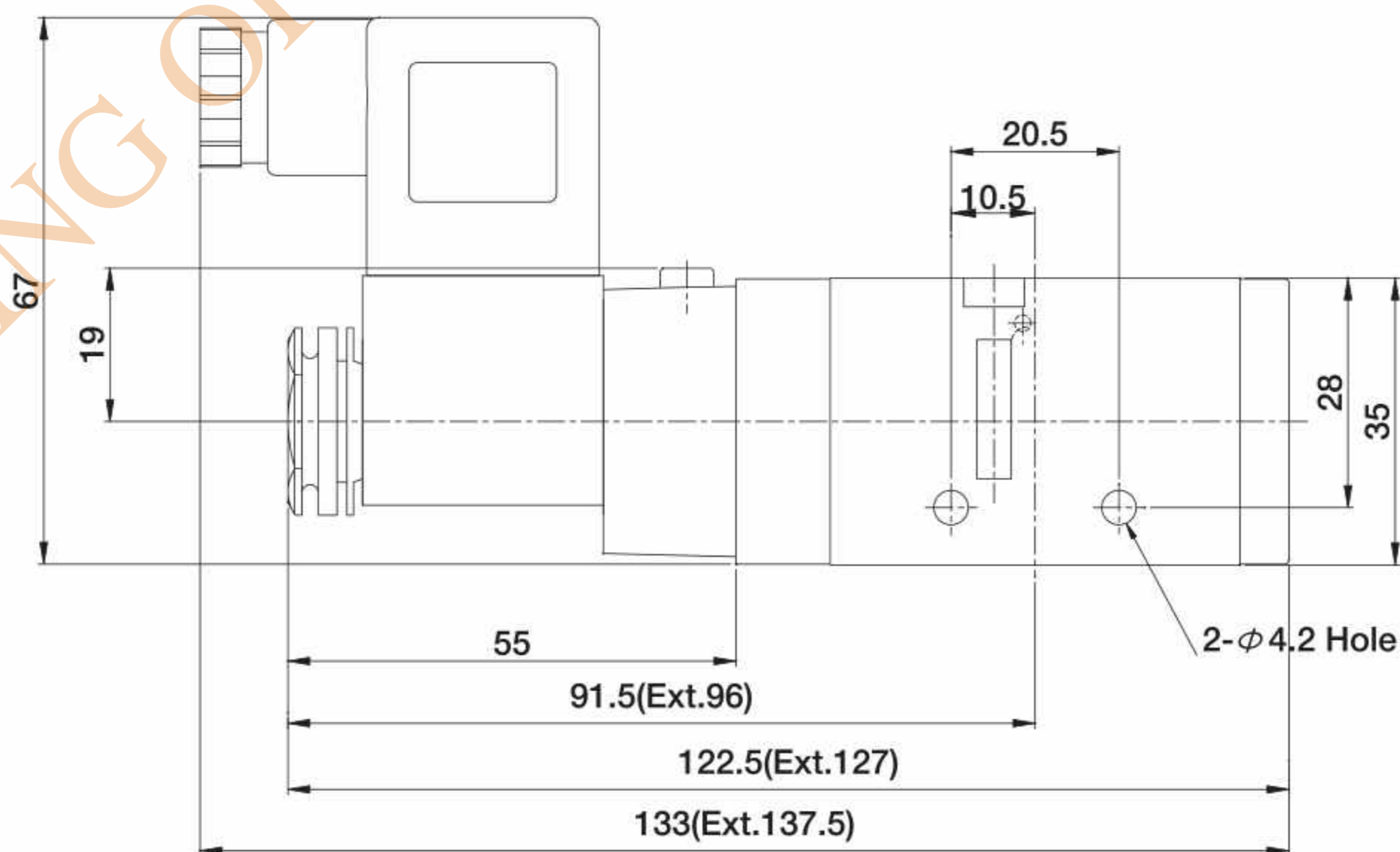
Lead wire

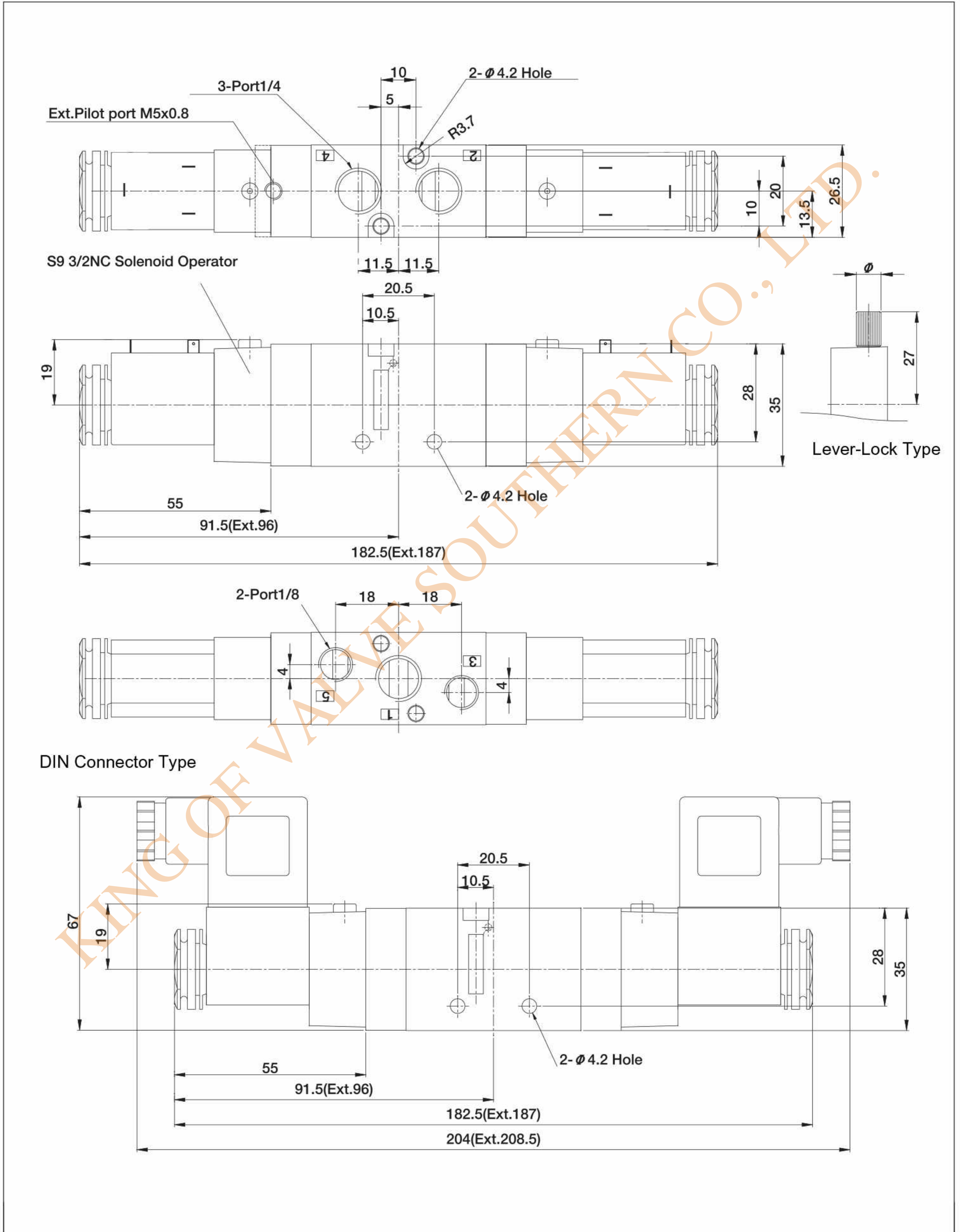
No	Description	Material
1	Body	Aluminum Diecasting
2	Spool (2-Position)	Aluminum Diecasting
3	Slide Packing	NBR
4	spool Spring	Steel
5	O-Ring	NBR
6	Body Cover	ZN
7	Gasket	NBR
8	Screw	Reson
9	Piston	-
10	Piston Packing	NBR
11	Filot Body	Reson
12	Screw	-

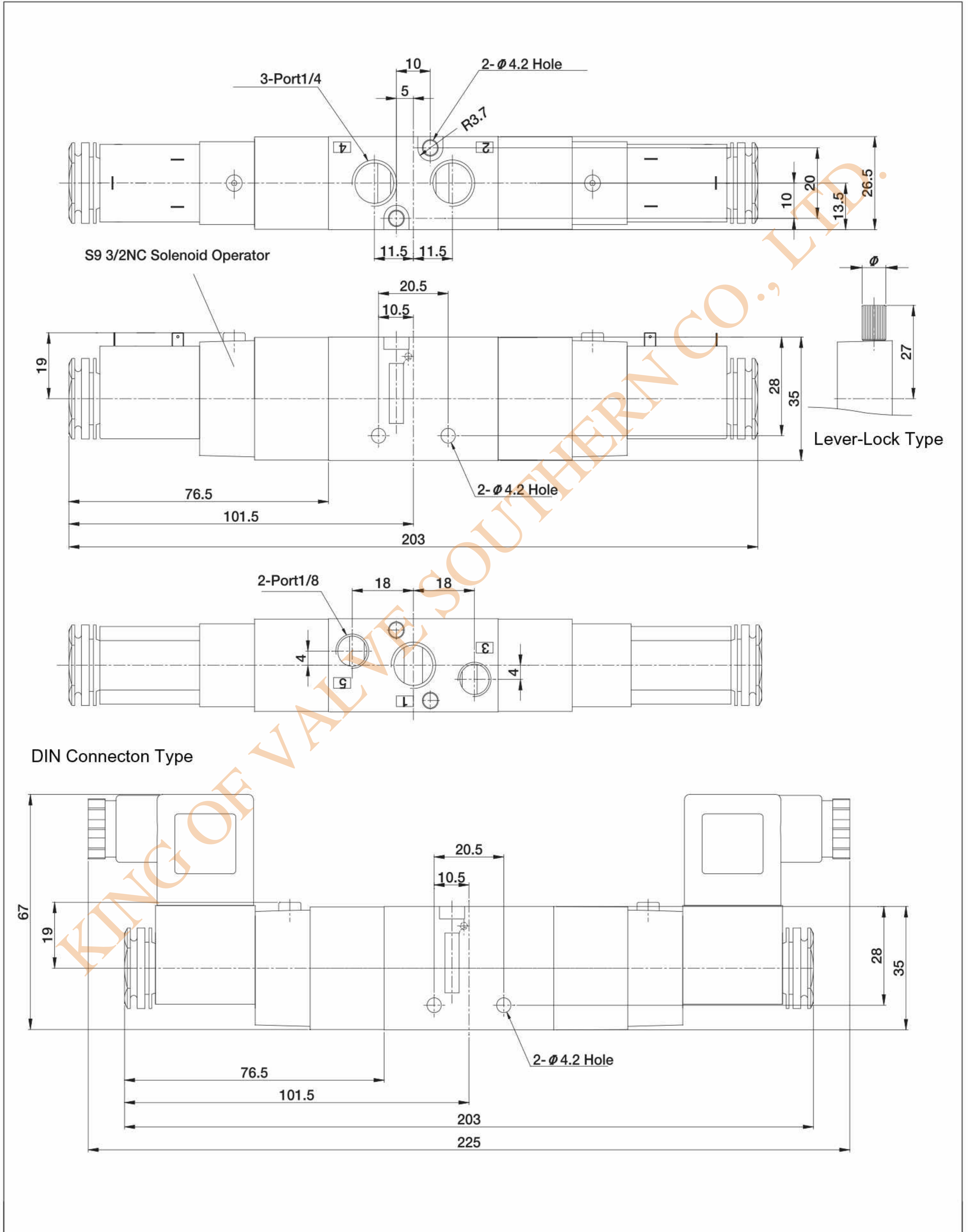
No	Description	Material
13	Spring Washer	-
14	Solenoid Operator Ass'y	-
15	Screw	-
16	Spool (3-Position)	
17	Gasket	
18	Return Spring	NBR
19	Spacer	Steel
20	Slider Holder	Steel
21	Slider	Steel
22	Pilot Body, 3 Position	Steel
23	Screw	SM12C



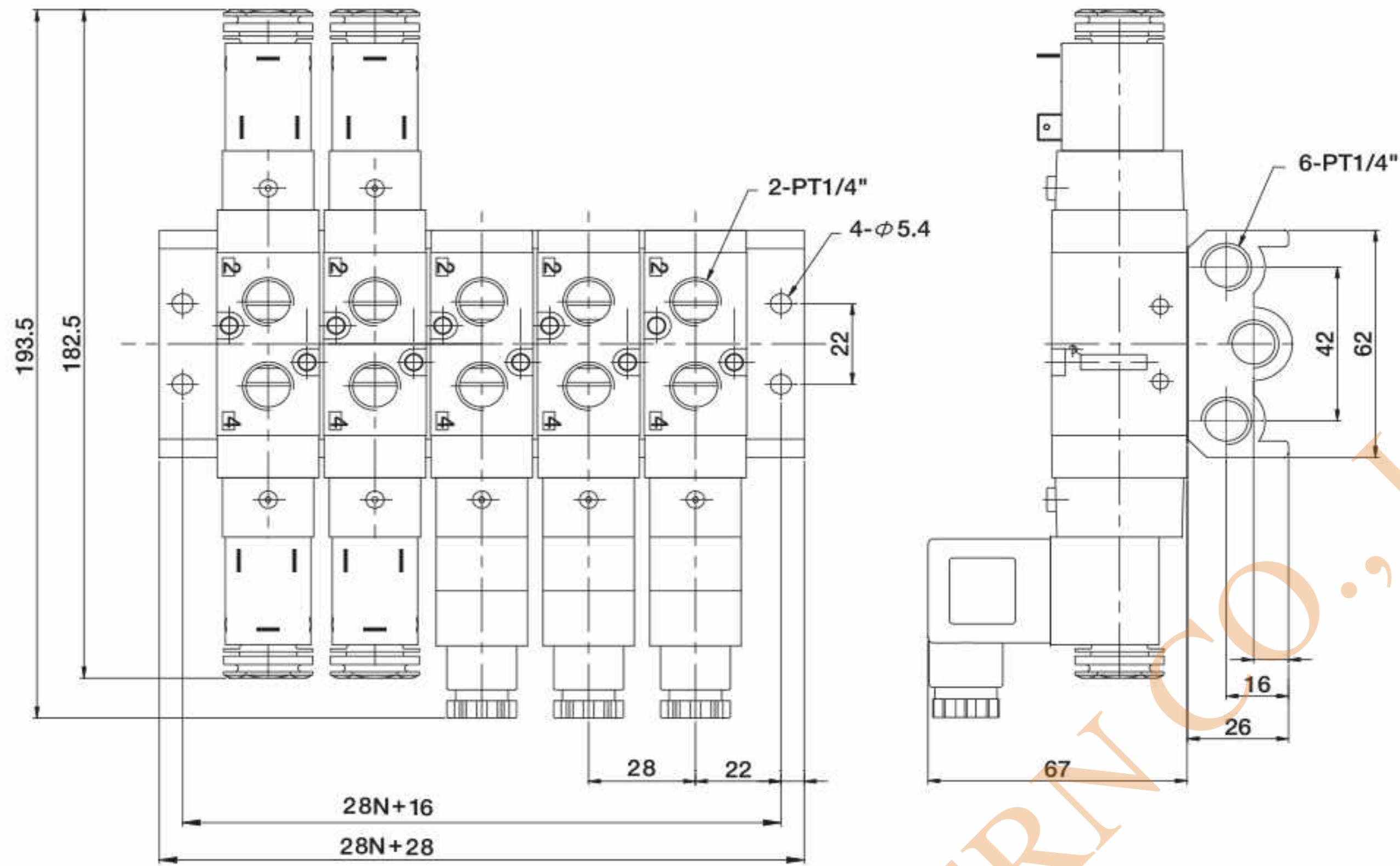
DIN Connector Type



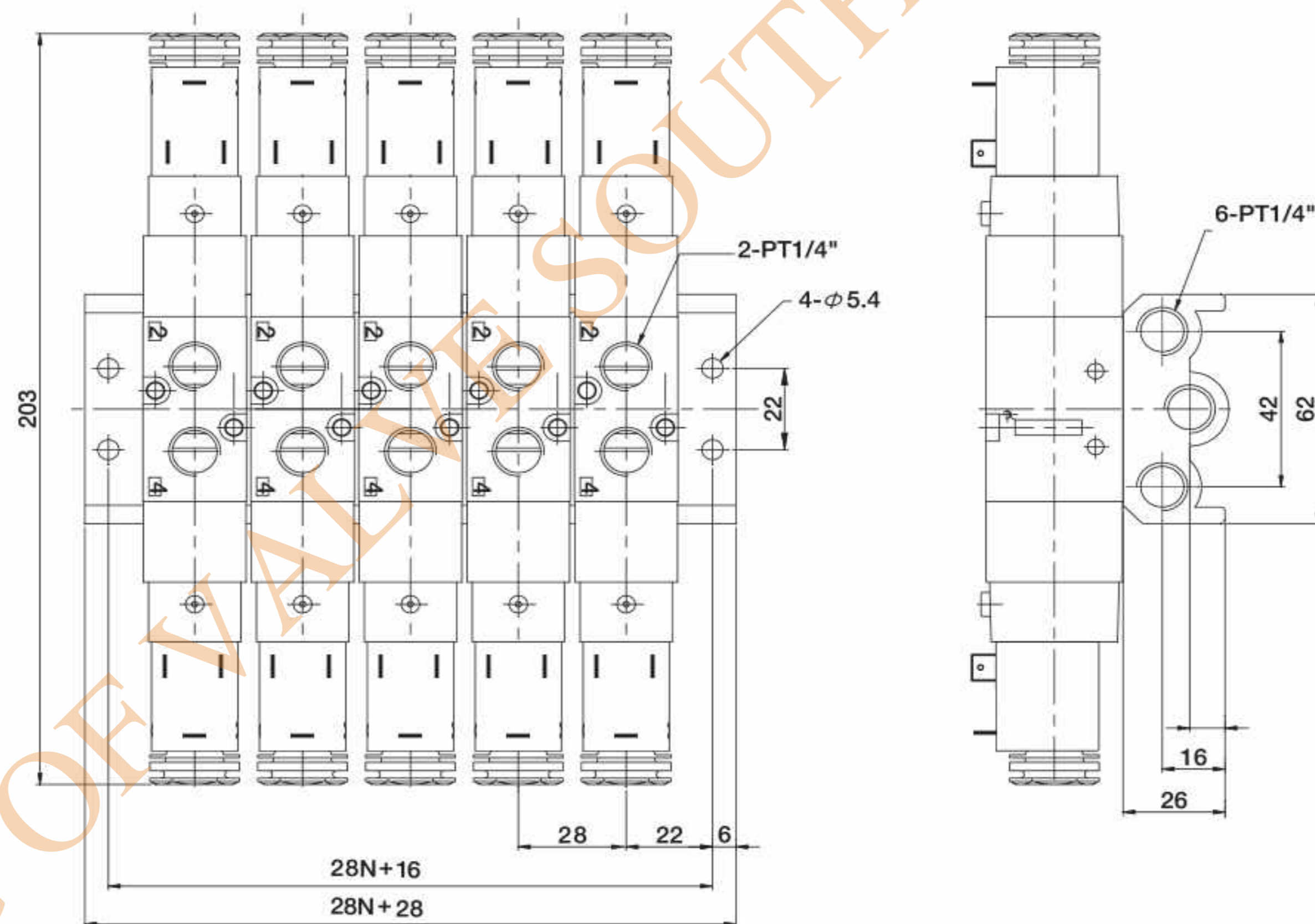




XB520S, D



XB520C, E, P



N : station

KING OF VALVE SOUTHERN CO., LTD.