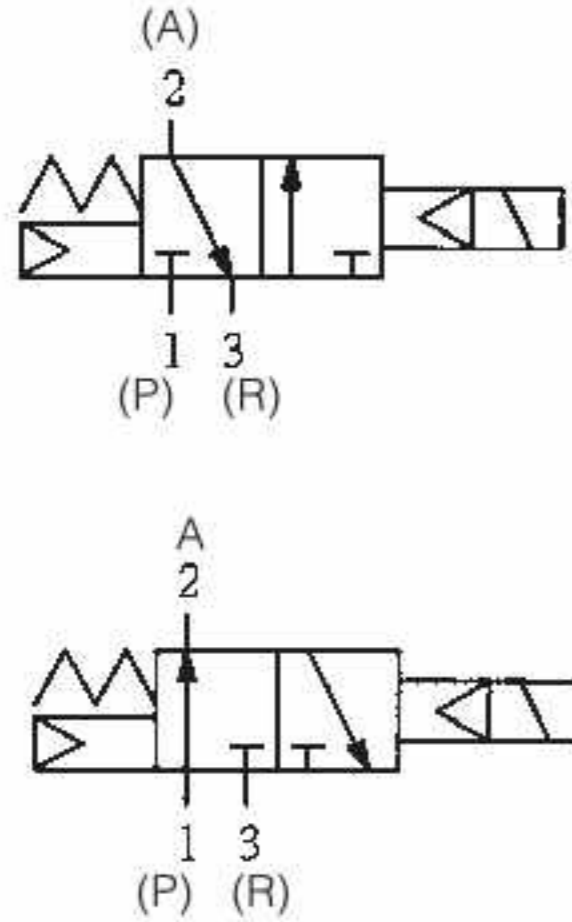


## SOLENOID VALVE

**XN320** 3/2 Way  
N·C/N·O Common



## Specification

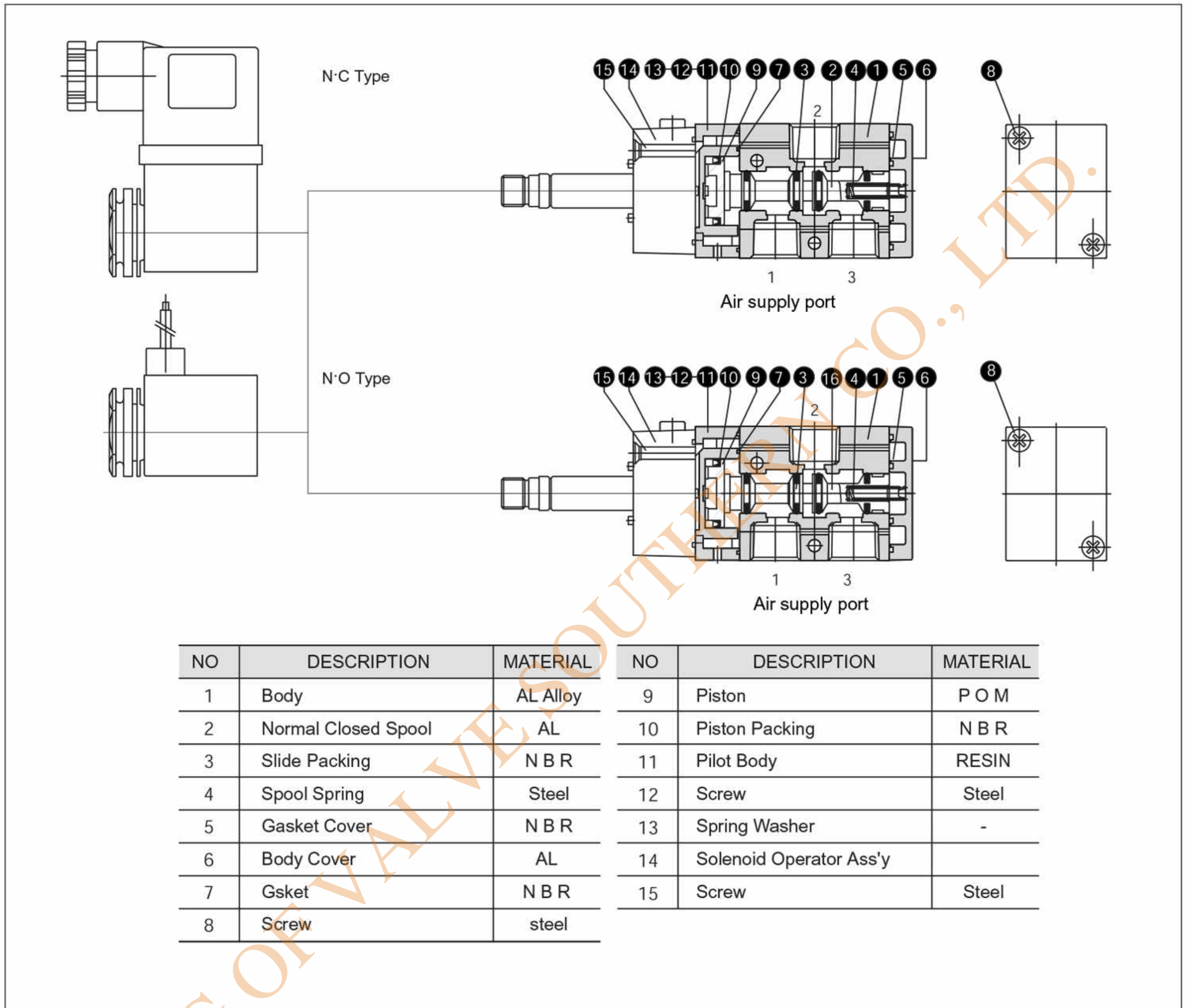
Item	Unit	XB320
Fluid		Non-Lubricated/Lubricated Air
Port Size	Rc(PT)	1/4
Effective Area	mm <sup>2</sup> (Cv)	23 (1.3)
Operating Temperature	°C	5 ~ 60
Pressure Range	MPa(bar)	0.15~0.9 (1.5~9.0)
Max. Operating Cycle	cycle/s	10
Response Time	ms	Less than 20
Exhaust type		individual Exhaust
Manual Override		Non-Lock/Lever-Lock
Shock/Vibration Resistance		30G~5G (8.3~200Hz)

## Electrical Specification

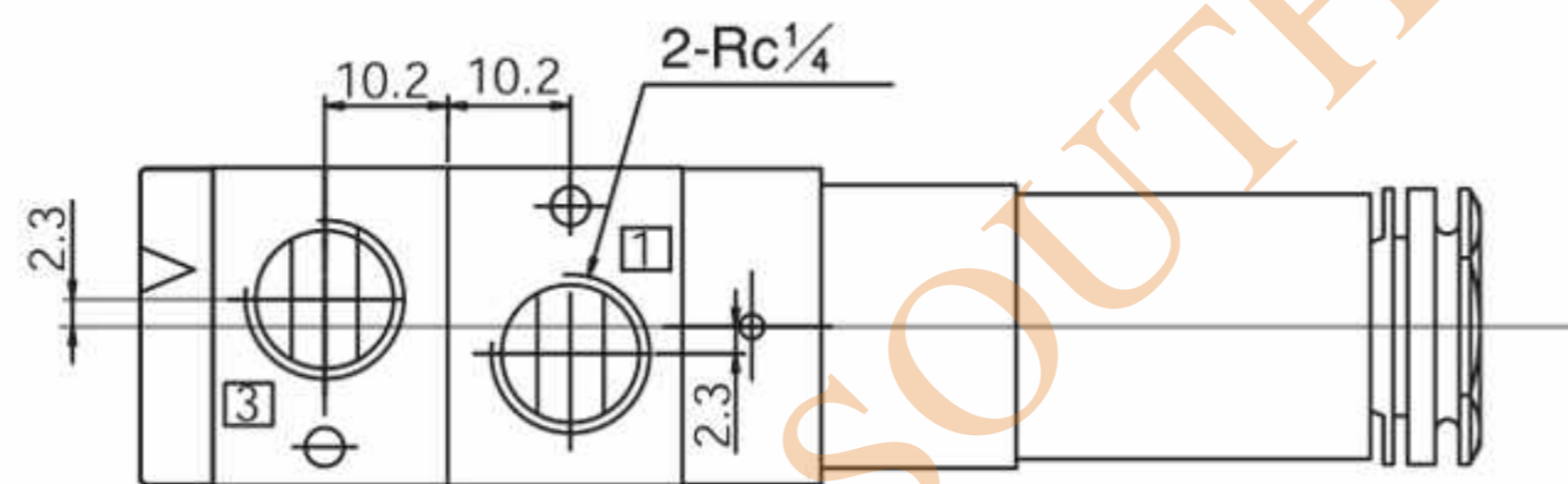
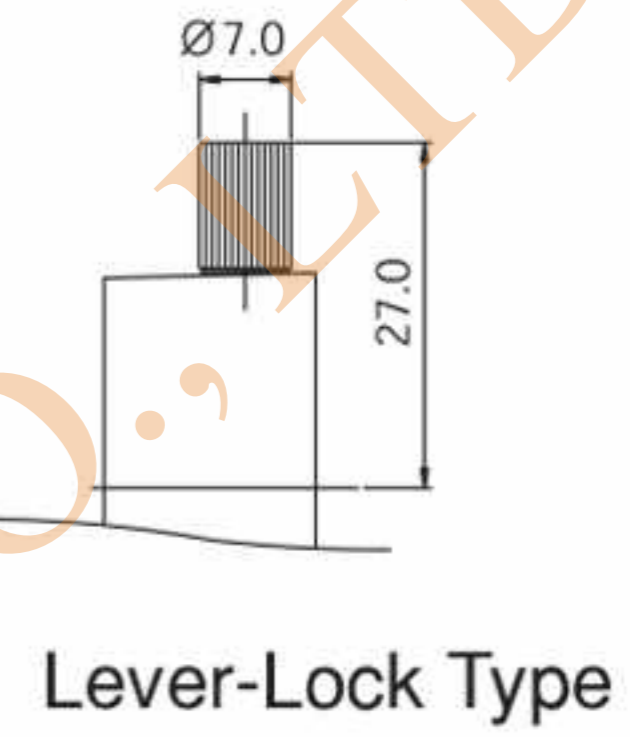
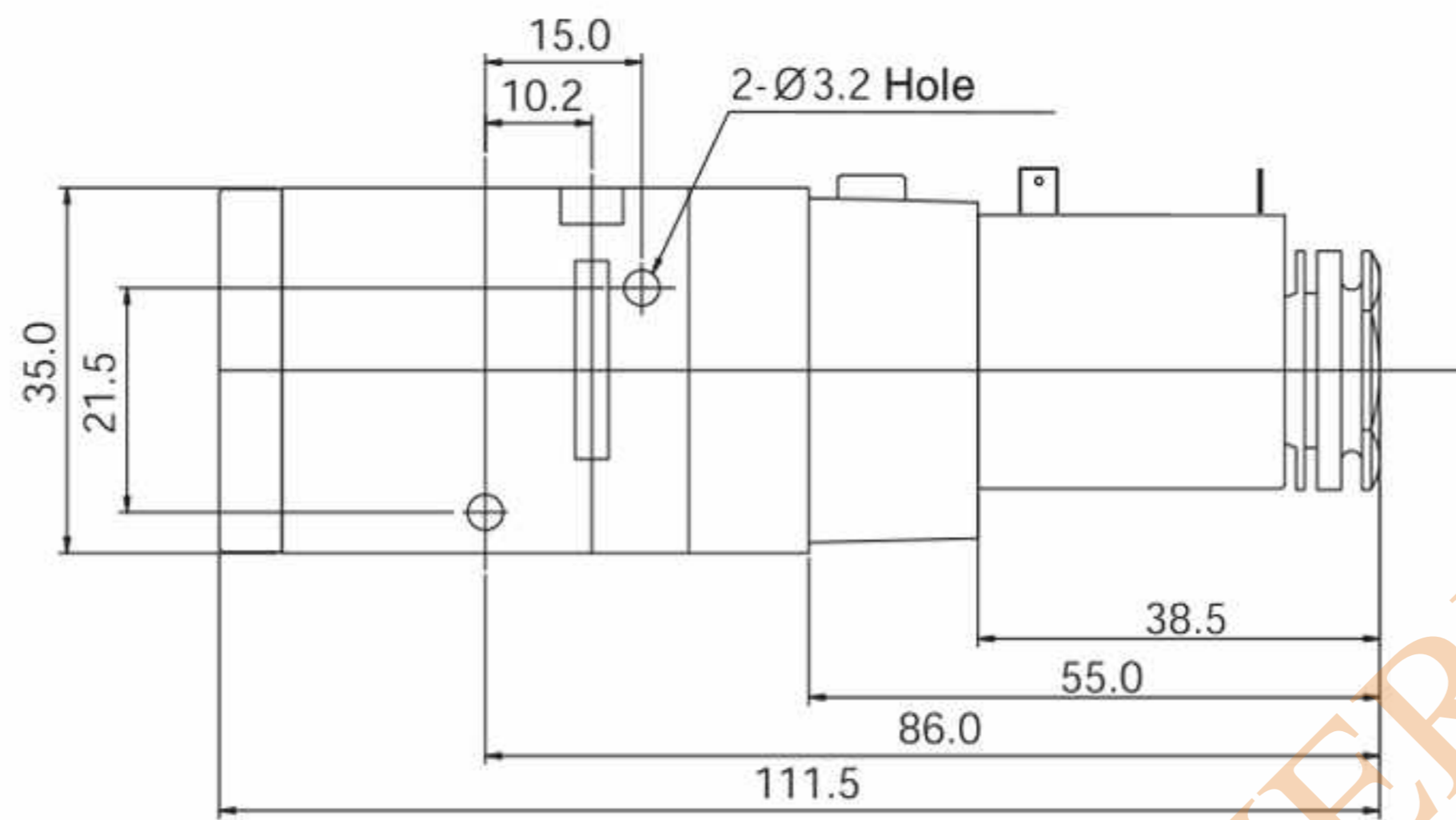
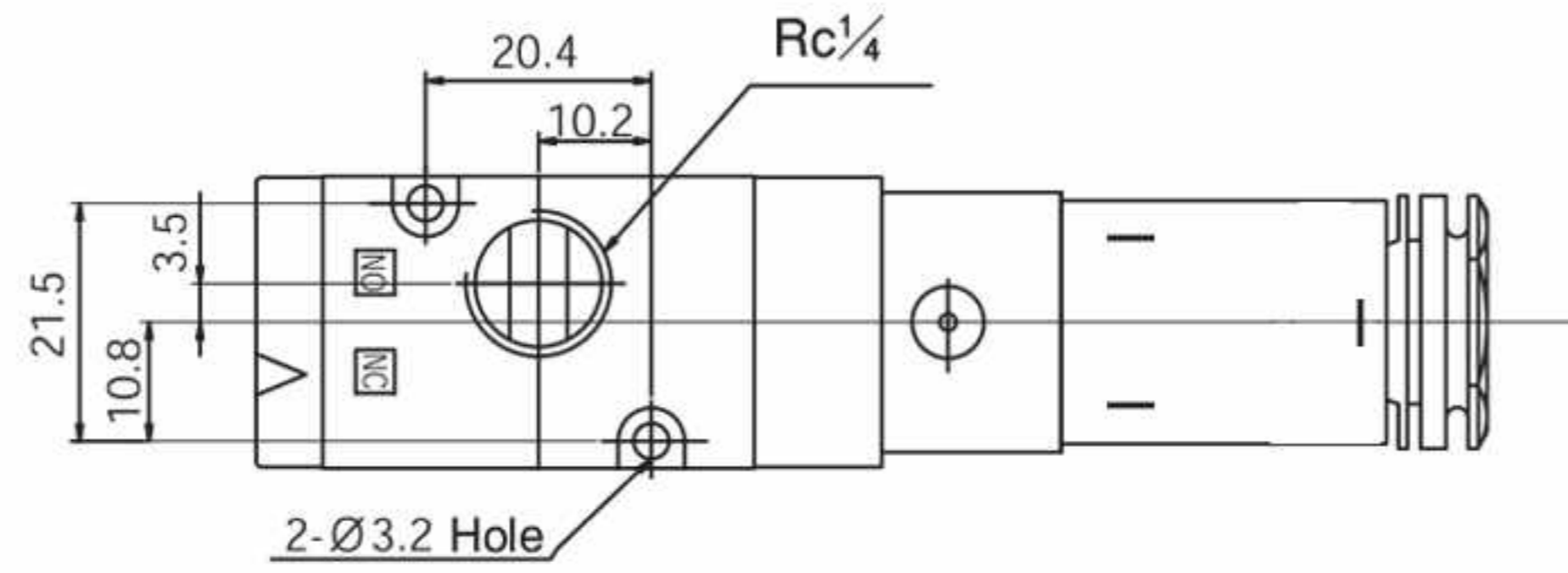
Voltage	V	DC24V, AC110V, AC220V(50~60Hz)
Allowable Voltage Fluctuation	%	± 10%
Power Consumption	W, VA	DC24V(2.5W), AC110/220V 50Hz(6VA)/60Hz(4.9VA)
Insulation Class		F Class
Wiring		lead Wire, DIN Connector
Indicate lamp		LED

### SOLENOID VALVE

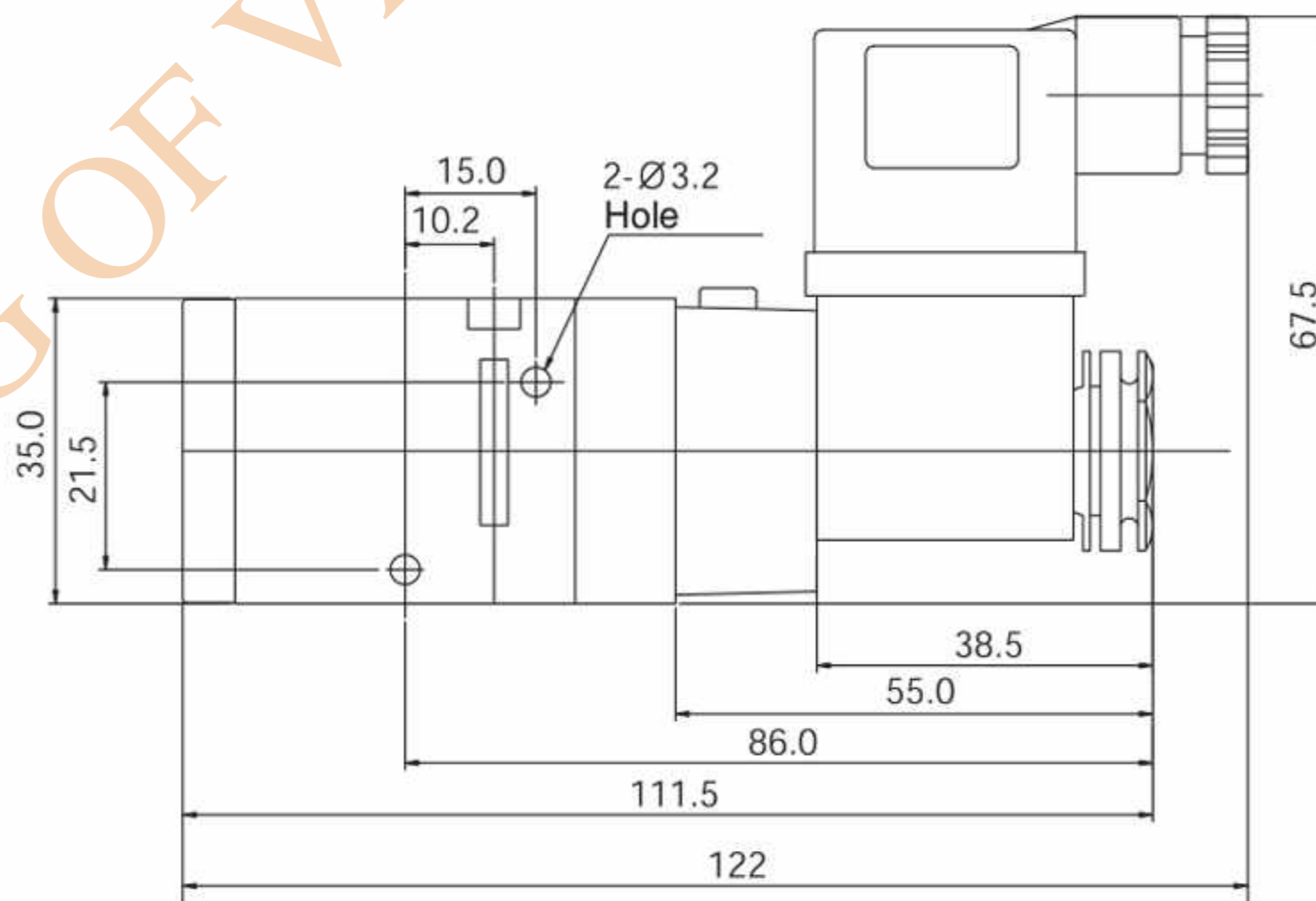
### Construction



SOLENOID VALVE



DIN Connector Type



KING OF VALVE SOUTHERN CO., LTD.