



### Specification

| Model                    | FRL                                    |     |     |
|--------------------------|--|-----|-----|
| Port size                | 1/4                                    | 3/8 | 1/2 |
| Media                    | Air                                    |     |     |
| Operating pressure range | 0 ~ 15 Bar.                            |     |     |
| Proof pressure           | 20 Bar.                                |     |     |
| Regulated pressure range | Standard type: 1 ~ 8.5 Bar.            |     |     |
|                          | High pressure type: 1 ~ 15 Bar.        |     |     |
| Ambient temperature      | (-5) ~ + 60 °C (No freezing)           |     |     |
| Attachment               | Pressure gauge (PG-20), L-type bracket |     |     |
| Weight                   | 800 g.                                 |     |     |

Order example:

**FRL - XFR05**

MODEL

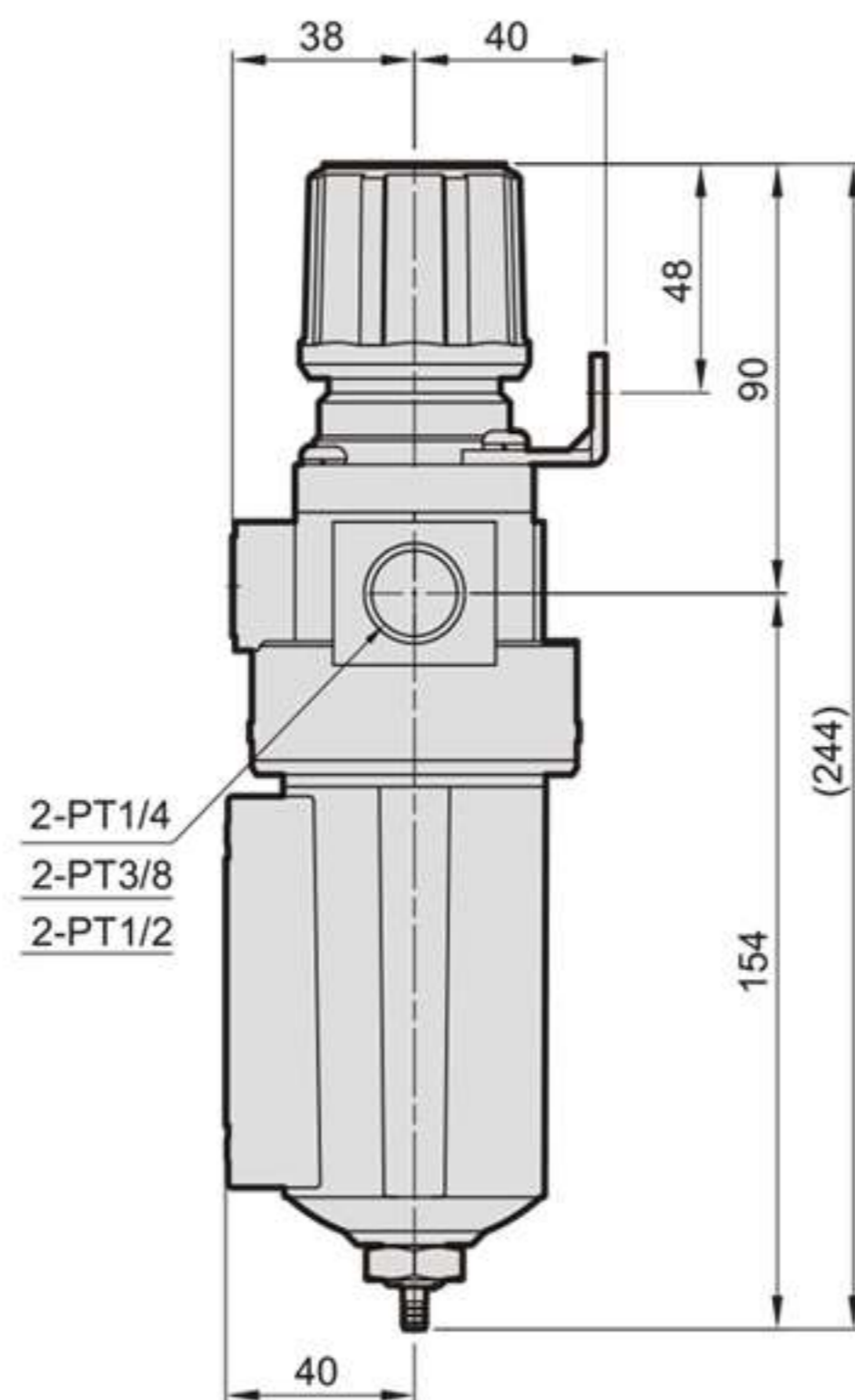
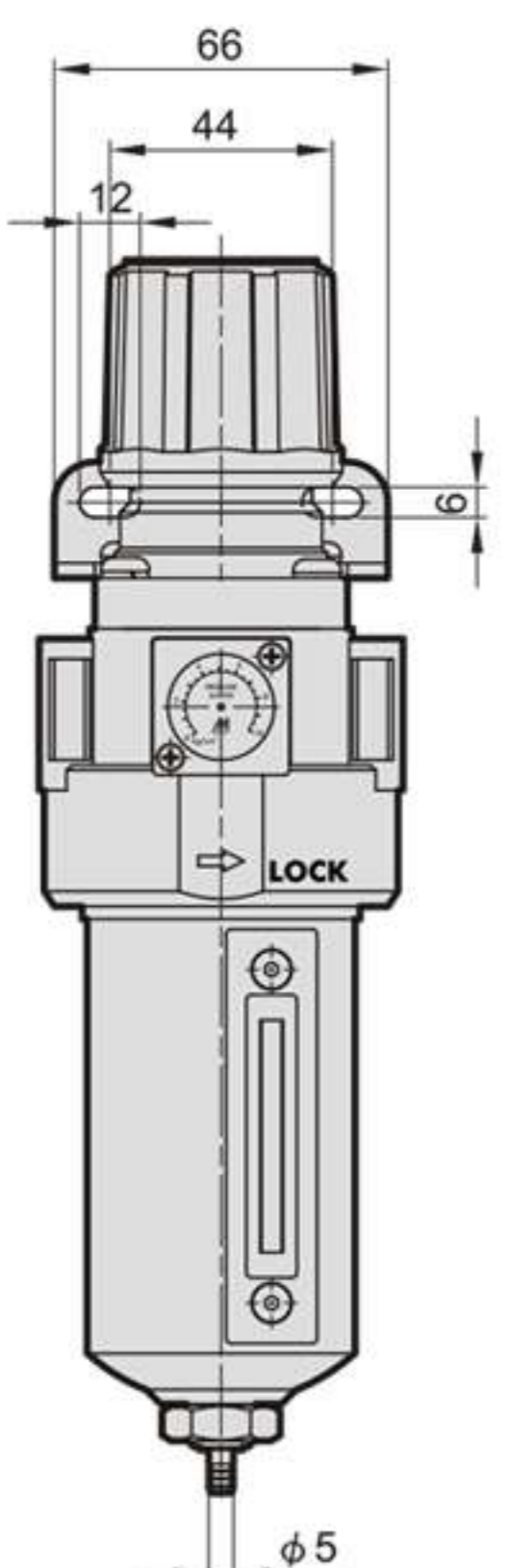
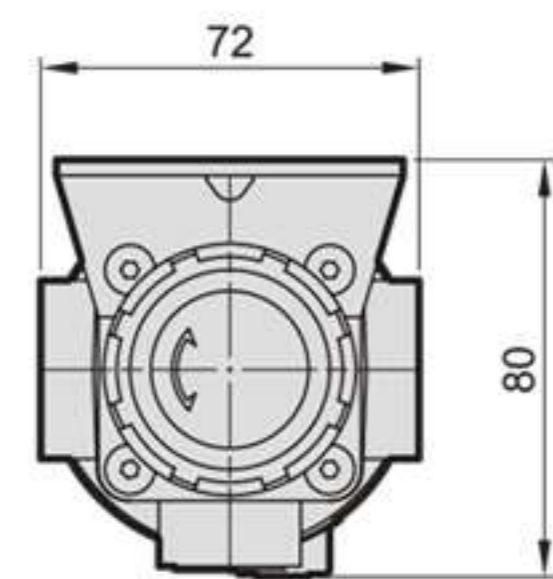
X05: 1/4"

X06: 3/8"

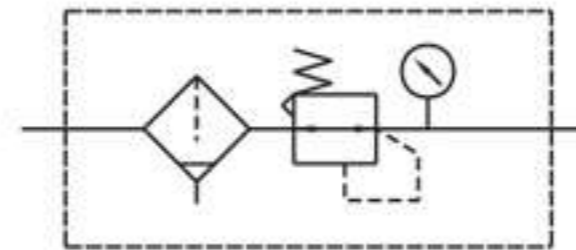
X07: 1/2"

X08: 3/4"

X09: 1"



### Symbol:



### Flow feature:

